



# MAKING RECYCLING EASY



PRODUCT CATALOGUE  
BESTSELLERS  
JANUARY 2024



|   |           |
|---|-----------|
| <b>WELCOME TO POSTWINK®</b>                         | <b>01</b> |
| <b>CONTENTS</b>                                     | <b>02</b> |
| <b>BETTER DISPOSAL BINS</b>                         | <b>04</b> |
| CUSTOMISE YOUR RECYCLING INITIATIVE WITH YOUR BRAND | 04        |
| USE YOUR BINS TO COLLECT A WIDE RANGE OF ITEMS      | 04        |
| <b>WASTE ICONS</b>                                  | <b>05</b> |
| <b>INDOOR: OFFICES, CLASSROOMS, EVENTS</b>          | <b>06</b> |
| THE ECOCYLINDERS®                                   | 06        |
| THE LEATHER-TOUCH MEDIS AND MAXIS                   | 08        |
| THE MONOCHROME: STANDARD AND SHORT MEDI HEIGHT      | 09        |
| THE INOX™ STAINLESS STEEL UNITS                     | 10        |
| THE TITANIC UNIT                                    | 11        |
| THE MEDI-C BIN                                      | 12        |
| THE R.EY RECYCLING BIN - NEW                        | 12        |
| THE RECYCLING BOXES                                 | 13        |
| CARDBOARD PAPER BINS - KRAFT BROWN                  | 14        |
| PEARLY-YON CARDBOARD BINS - WHITE / PRINTED         | 14        |
| VERDE MINI 2-COMPT STEEL BIN                        | 15        |
| VERDE TALL 2-COMPT TALL STEEL BIN                   | 15        |
| MINI 2-DIVISION LEATHER-TOUCH                       | 15        |
| <b>KITCHEN SOLUTIONS</b>                            | <b>16</b> |
| THE SESAME RANGE: SENSOR-TOUCH BINS                 | 16        |
| TWO-DIVISION RECYCLING SESAME BINS                  | 16        |
| BEEWING - SIDE OPENING SESAME BIN                   | 17        |
| THREE-DIVISION RECYCLING SENSOR BIN -SENSOR-TAP     | 17        |
| COMMERCIAL PEDAL BINS: 25L, 50L, 90L                | 18        |
| <b>OUTDOOR RECYCLING SOLUTIONS</b>                  | <b>19</b> |
| THE MODULAR RECYCLING BIN SET                       | 19        |
| LARGE SWING FLAP DIPPED STAINLESS STEEL UNIT        | 19        |
| THE RECYCLE LID ON CEMENT BINS                      | 20        |
| THE STELLID ON SQUARE CEMENT BINS                   | 20        |
| THE POLYPLANK DOUBLE BIN                            | 21        |
| THE BISHOP UNIT                                     | 21        |
| THE RECYCLING IGLOO                                 | 22        |
| <b>ASHTRAYS</b>                                     | <b>23</b> |
| STAND-UP ASHTRAY WITH LITTER BIN FRONT              | 23        |
| WALL-MOUNTED ASHTRAY                                | 23        |
| CONCRETE PYRAMID ASHTRAY                            | 23        |
| <b>SPECIALTY BINS</b>                               | <b>24</b> |
| CONFIDENTIAL PAPER BINS                             | 24        |
| THE CONFIDENTIAL WHEELIE BIN                        | 24        |
| BATTERY COLLECTION / CFL BULBS BINS / SMALL E-WASTE | 24        |
| THE BATTERY ECOCYLINDER™                            | 24        |

|  |           |
|--|-----------|
| EWASTE   | 25        |
| THE COFFEE ECOCYLINDER™  | 25        |
| MEDICAL / BIOHAZARD WASTE BINS & BAGS  | 26        |
| MONKEY-PROOF BINS 45L AND 90L  | 26        |
| <b>COMPOSTING</b>  | <b>27</b> |
| COMPOSTING BINS: BINS THAT KEEP FOOD SCRAPS                                  | 27        |
| COMPOSTING ECOCYLINDER™  | 27        |
| EARTH BOKASHI BUCKET BIN, 25L AND BOKASHI                                    | 27        |
| AIRTIGHT BOKASHI DRUMS, 50L OR 100L TO 150L (REFURBISHED)                    | 28        |
| AERATED KITCHEN CADDY, WITH COMPOSTABLE LINERS                               | 28        |
| ROUND / SQUARE FOOD COLLECTION COMPOST BINS, 15L                             | 28        |
| WORM FARMS   | 29        |
| THE SMALL GARDEN COMPOSTERS  | 29        |
| THE BULK GARDEN COMPOSTER: COMPOSTING IGLOO                                  | 30        |
| <b>RECYCLING STORAGE / WASTE AREAS</b>                                       | <b>31</b> |
| COLOUR-CODED WHEELIE BINS  | 31        |
| BULK BAG STEEL FRAME   | 33        |
| ALUMINIUM CAN CRUSHER - WALL MOUNTED   | 33        |
| STAINLESS STEEL SORTING TABLE  | 33        |
| WALL SIGNAGE   | 33        |
| <b>BAGS / TRAINING / POSTERS</b>   | <b>34</b> |
| ADD-ONS & SERVICES FOR A SUCCESSFUL INITIATIVE                               | 34        |
| <b>HOW TO ORDER, MEMBERSHIPS &amp; OUR GIVE-BACK CONTRIBUTION</b>            | <b>35</b> |
| HOW DO I PLACE AN ORDER?   | 35        |
| GET IN TOUCH, AND KEEP IN TOUCH  | 35        |
| MEMBERSHIP TO INDUSTRY BODIES  | 35        |
| OUR "GIVE-BACK" CONTRIBUTION   | 35        |
| <b>SOME OF OUR CORPORATE CLIENTS</b>   | <b>36</b> |
| <b>LEAD TIMES AND TERMS &amp; CONDITIONS</b>                                 | <b>37</b> |
| LEAD TIME  | 37        |
| GENERAL INFORMATION, TERMS AND CONDITIONS, INTELLECTUAL PROPERTY INFORMATION | 37        |
| PACKAGING AND EXPORTS  | 38        |

## CUSTOMISE YOUR RECYCLING INITIATIVE WITH YOUR BRAND

We believe that by having your own corporate logos and customised waste list on your recycle bin, your recycling communication to your staff and your clients is more effective – and effective communication results in effective waste separation!

All our products can be branded with your logo, with minimal effort and cost. Examples of artwork with your logo reflect below, with our range of available waste icons and labels on the following page.



## USE YOUR BINS TO COLLECT A WIDE RANGE OF ITEMS

Whether you want to turn your bins into PPE collection or hazardous collections bins, or into donation bins, the Postwink® customises our range to fit your purpose. See below our waste icons and recommended colours for waste separation and more.





# WASTE ICONS





# INDOOR: OFFICES, CLASSROOMS, EVENTS

## THE ECOCYLINDERS®

Our EcoCylinders® are one of our bestsellers and come in a variety of usages, depending on your waste type.



- 485mm diameter x 660mm height
- Sizes of throw-in holes:
  - 150mm diameter for 1-waste bin
  - 140mm diameter for 2-waste bin
  - 115mm diameter for 3-waste bin
- Labelling of the lid is layered for durability and scratch-resistance
- Bin made of polyethylene (100% recyclable) & is very robust
- Bodies available in charcoal-black or light grey - although we only keep stock of the charcoal-black colour hence lead times for light grey may vary.
- 2-waste & 3-waste bins have removable sturdy bin liners & come with rope handles - unless the bin is full wrapped, then we recommend not having any handles.



| INDOOR OFFICE: ECOCYLINDER®  | PRODUCT CODE |
|--|--------------|
| 1-waste EcoCylinder bin  | PR102        |
| 2-waste EcoCylinder bin *  | PR126        |
| 3-waste EcoCylinder bin *  | PR103        |
| Composting EcoCylinder (no holes, on wheels with rope handles)                 | PR165        |
| Add-on wheels: 4 x 50mm rubber castor wheels                                   | AD040        |
| Add-on corporate logo or recycling label on the sides approx. A4 / 400 x 270mm | AD070        |
| Add-on rope dandles for side or to attach the lid to the body                  | AD072        |
| Add-on middle wrap-around branding (18cm high)                                 | AD006        |
| Add-on full wrap-around branding (full body wrap)                              | AD007        |



# INDOOR: OFFICES, CLASSROOMS, EVENTS

ASK US  
ABOUT  
RENTING  
THESE

[www.postwink.co.uk](http://www.postwink.co.uk)





# INDOOR: OFFICES, CLASSROOMS, EVENTS

## THE LEATHER-TOUCH MEDIS AND MAXIS

Exclusive to Postwink®, these Leather-touch MEDI and MAXI bins are moulded locally from ABS plastic leather-grain material (recyclable material). The finish makes these units scratch-resistant, require little maintenance & are ideal for indoor. The branding is printed on and is customised according to customer needs. They can also include a battery-collector and handles (on request).

The Leather-touch units come in a Larger MAXI size (Height 80cm) and a smaller MEDI size (height 60cm) – and both sizes come in 1, 2, 3 or 4-divisions.



MAXI 3-compart (89 x 35 x 81cm)



MAXI 4-compart (89 x 35 x 81cm)



MEDI & MAXI 1-compart



MAXI 2-comp bin



MAXI 4-comp bin



MEDI 3-comp bin, with slot hole

| INDOOR OFFICE: LEATHER-TOUCH RECYCLING BINS - MAXI & MEDI                       | PRODUCT CODE |
|---|--------------|
| MEDI 4-compart. 700 x 360 x 600mm, 4 x square holes 120 x 120mm                 | PC176        |
| MEDI 3-compart. 700 x 360 x 600mm, 3 x square holes or slot/round/square option | PC120        |
| MEDI 2-compart. 700 x 360 x 600mm, 2 x square holes                             | PC130        |
| MEDI 1-compart. 400 x 360 x 600mm, 1 x round hole                               | PC122        |
| MAXI 4-compart. 890 x 350 x 810mm, 4 x square holes 120 x 120mm                 | PC177        |
| MAXI 3-compart. 890 x 350 x 810mm, 3 x square holes or slot/round/square option | PC226        |
| MAXI 2-compart. 890 x 350 x 810mm, 2 x square holes                             | PC238        |
| MAXI 1-compart. 400 x 350 x 810mm, 1 x round hole                               | PC233        |
| Add-on side pocket for batteries  | AD017        |
| Add-on side handles (most suitable for MEDI sizes)                              | AD072        |
| Add-on corporate logo on the front *  | AD071        |

\*We print logos in white or in full colour – but we cannot guarantee the outcome of the colour printing onto the black material. Kindly note that if artwork is not provided in the correct format within 4 working days of receiving the order, lead times will be negatively affected.





# INDOOR: OFFICES, CLASSROOMS, EVENTS

## THE MONOCHROME: STANDARD AND SHORT MEDI HEIGHT

- Powder-coated mild steel unit with hinged top lid, and internal bag holders for each compartment
- Prices include the waste names in cut-out lettering on lid
- Waste branding and corporate branding on front and top, additional corporate logos and full front branding possible at additional cost
- Bin body available in silver, white or black
- Square-shaped throw-in holes (unless stated otherwise)



4-compt, silver with full branding



4-compt with half branding, open



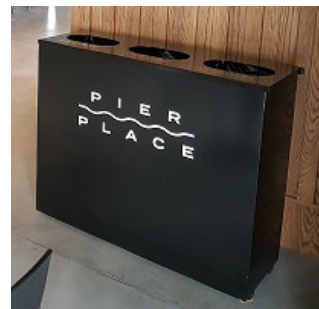
3-compt, black with full branding



3-compt, monochrome, with half branding



3-compt, black with half branding



3-compt, black with half branding



3-compt MEDI, silver with half branding



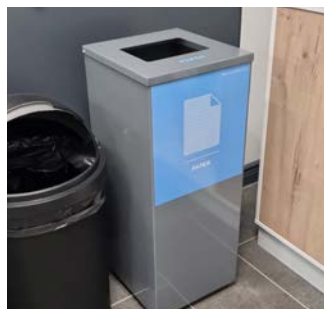
3-compt with full branding (client artwork)



2-compt, silver with half branding



2-compt, lid branding only



1-compt with half branding

| INDOOR OFFICE: THE MONOCHROME                      | PRODUCT CODE |
|--|--------------|
| 4-compart. 1250 x 350 x 820mm H                    | MS249        |
| 3-compart. 950 x 345 x 800mm H                     | MS140        |
| 3-compart. 700 x 345 x <b>600mm H - SHORT MEDI</b> | MS1028       |
| 2-compart. 650 x 345 x 820 mm H                    | MS162        |
| 1-compart. 320 x 345 x 820 mm H                    | MS161        |
| Half-way front branding + full lid                 | ADO44/ADO46  |
| Full front branding (lid has cut-out lettering)    | AD056        |
| Add-on corporate logo on front                     | AD073        |



# INDOOR: OFFICES, CLASSROOMS, EVENTS

## THE INOX™ STAINLESS STEEL UNITS

Stainless steel ensures a premium look for either indoor (grade #430) or outdoor areas (grade #304). The INOX™ units come in 3 different designs and all designs can be made in 1-, 2-, 3- or 4-compartment.

### 3 different designs

1. INOX™ FLAT TOP
2. INOX™ HOLE-TOP
3. INOX™ PEAK TOP

1



Flat-top INOX™, 3-comp



Flat-top INOX™, 4-comp



INOX™ locking system

2



Hole-top INOX™, 4-comp



Hole-top INOX™, 3-comp

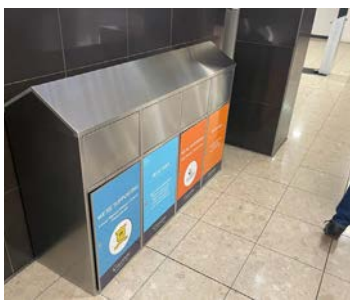


Hole-top INOX™, 3-comp



Hole-top INOX™, 1-comp

3



Peak-top INOX™ 3-comp



Peak-top INOX™ 4-comp

### Other Specifications:

- 46L plastic inner per compartment
- #430 grade for indoor. #304 outdoor grade should not be used in direct sunlight or in extreme weather condition
- One quality label per door included
- Front door opens
- Additional labelling possible

| INDOOR OFFICE: THE INOX™<br>ALL AVAILABLE IN 1, 2, 3 OR 4 COMPARTMENTS | PRODUCT CODE<br>#430 S/STEEL GRADE | PRODUCT CODE<br>#304 S/STEEL GRADE |
|--|------------------------------------|------------------------------------|
| FLAT-Top INOX™ (these have flaps)                                      | SS430242                           | SS304242                           |
| HOLE-Top INOX™ (these have no flaps)                                   | SS430241                           | SS304241                           |
| PEAK-Top INOX™ (these have flaps)                                      | SS430243                           | SS304243                           |
| Add-on corporate logo (onto door branding)                             | AD073                              |                                    |
| Add-on locking system on the doors                                     | AD074                              |                                    |

**Approximate outer sizes:** 1-comp: 405 x 450 x 950mm H; 2-comp: 780 x 450 x 950mm H; 3-comp: 1185 x 450 x 950mm H; 4-comp: 1700 x 450 x 950mm H.

**Note:** the PEAK TOP is approx. 10cm higher than the FLAT and HOLE TOPS.



# INDOOR: OFFICES, CLASSROOMS, EVENTS

## THE TITANIC UNIT

- Powder-coated mild steel unit with front doors & compartments that fit the 140L wheelie bins (available separately).
- Price includes waste names in cut-out lettering on lid, as well as standard front door branding.
- Waste branding and corporate branding on the sides, full lid branding and additional Corporate logos possible at additional cost.
- Bin body available in silver, white or black.
- Open square-shaped throw-in holes (unless stated otherwise).
- Due to the large size, transport costs can be significant, hence please request an accurate quote from us.



| INDOOR OFFICE: THE TITANIC  | PRODUCT CODE |
|---|--------------|
| 3-compart. 1850 x 600 x 1100mm H  | MS224        |
| 2-compart. 1230 x 600 x 1100mm H  | MS236        |
| 3-compart. MINI Titanic-80, incl. front door branding 1580 x 600 x 1000mm H | MS224-MINI   |
| 2-compart. MINI Titanic-80, incl. front door branding 1060 x 600 x 1000mm H | MS236-MINI   |
| Add-on side branding  | AD110        |
| Add-on corporate logo on front  | AD073        |
| Add-on 140L wheelie bin as inner  | PI204        |

Ask us about a smaller version: THE TITANIC-80!



# INDOOR: OFFICES, CLASSROOMS, EVENTS

## THE MEDI-C BIN

- 3 divisions, with built-in bag holders
- Powder-coated mild steel, available in silver, white or black.
- 30 degree angle lid, hinged.
- Outer size: 90 x 35 x 60cm High
- Standard branding included
- Additional branding available, at additional cost
- Made in South Africa



| MEDI-C RECYCLING BIN ON WHEELS        | PRODUCT CODE |
|---------------------------------------|--------------|
| The Medi-C slanted lid                | MS1035       |
| Add-on Clear recycling bags           | AD057        |
| Add-on Biodegradable Bag (Bonnie Bio) | AB112        |

## THE R.EY RECYCLING BIN - NEW

- 3 divisions, with built-in bag holders
- Includes 3 plastic inner bins
- Powder-coated Mild Steel in matt black.
- Outer size: 70 x 35 x 60cm High
- Two closed throw-in holes, One open throw-in hole
- Includes standard labeling - additional labels available on request.
- Made in South Africa



| R.EY RECYCLING BIN  | PRODUCT CODE |
|---|--------------|
| R.EY Recycling Bin - incl. colour-coded throw-in holes                    | MS1039       |
| Add-on Recycling Sticker, each 12x 12cm - request teardrop or round shape | AD106        |
| Add-on Clear recycling bags   | AD057        |
| Add-on Biodegradable Bag (Bonnie Bio)                                     | AB112        |



# INDOOR: OFFICES, CLASSROOMS, EVENTS

## THE RECYCLING BOXES

This range of popular, cost-effective recycling bins are made from cardboard and are hence easily recyclable.

- Colours: Black for General Waste  
Blue for Paper  
Green for Glass  
Yellow for Plastic  
Red for Tin Cans  
Brown for Compostable  
Green for Mixed Recycling or plain white (unprinted).
- Size: 330 x 270 x 730mm H
- Throw in hole dimension: 160mm
- For unusual waste names, we can include a separate label (extra cost applies)
- Fit the regular sized bags as liners
- Flat-Packed for transport



| THE RECYCLING BOX                          | PRODUCT CODE |
|--|--------------|
| 100% Cardboard recycling box               | CB1025       |
| Add-on clear bags 85L                      | AD057        |
| Add-on 85L biodegradable bags (Bonnie Bio) | AB112        |

\*Customised printing of these units is possible for a minimum order quantity of 350 pces and more. Ask us for a quote on this.



# INDOOR: OFFICES, CLASSROOMS, EVENTS

## CARDBOARD PAPER BINS - KRAFT BROWN

- Sturdy cardboard bin with lid
- **Slot** for Paper (not a round hole)
- Fully compostable bin
- Recycling labels can be added e.g. Paper
- Size: 36 x 36 x 76cm H
- Approx. 100L capacity
- Ideal for offices and events where paper is being collected



| INDOOR SMALL PRODUCT      | PRODUCT CODE |
|---------------------------|--------------|
| Kraft cardboard paper bin | CB189        |
| "Paper" recycling label   | AD001        |

## PEARLY-YON CARDBOARD BINS - WHITE / PRINTED

- Sturdy cardboard bin with lid
- Hole shape suitable for most recyclables
- Can be white or be printed. Printed units may require a MOQ
- Recycling labels added for smaller quantities e.g. Paper
- Size: 35 x 35 x 60cm H
- Approx. 75L capacity
- Ideal for offices and events



| INDOOR SMALL PRODUCT                                     | PRODUCT CODE |
|--|--------------|
| White cardboard bin -unprinted                           | CB1002       |
| Recycling label  | AD001        |
| Printed cardboard - client's own artwork (MOQ: 350 pces) | CB171        |
| PPE printed  | CB171-PPE    |



# INDOOR: OFFICES, CLASSROOMS, EVENTS

## VERDE MINI 2-COMPT STEEL BIN

- Suitable for hotel rooms and offices
- Partitioned into 2 compartments
- No inner compartments – individual bags to be manually fitted into place
- Powder-coated mild steel
- Colours available: Grey, black – other colours available on request
- Size: 30 x 30 x **30cm H**
- Made in South Africa

| INDOOR SMALL PRODUCT  | PRODUCT CODE |
|-----------------------|--------------|
| Verde mini bin        | SS184        |
| Add-on corporate logo | AD030        |



## VERDE TALL 2-COMPT TALL STEEL BIN

- Suitable for offices
- Partitioned into 2 compartments
- No inner compartments – individual bags to be manually fitted into place
- Powder-coated mild steel
- Colours available: Grey, black – other colours available on request
- Size: 30 x 30 x **60cm H**
- Made in South Africa

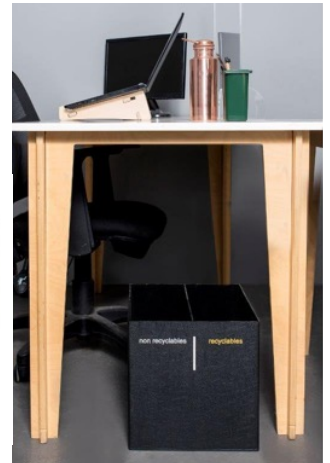
| INDOOR SMALL PRODUCT                       | PRODUCT CODE |
|--|--------------|
| Verde Tall Steel Bin                       | MS1034       |
| Add-on Corporate Logo                      | AD030        |
| Add-on Clear bags 85L                      | AD057        |
| Add-on 85L Biodegradable Bags (Bonnie Bio) | AB112        |



## MINI 2-DIVISION LEATHER-TOUCH

- Custom-made from ABS plastic (including recycled content)
- Open-top 2-compartment small bin in black
- “Leather-touch” refers to the scratch-resistant plastic material – the bin is not made of leather.
- “Recycling” and “General waste” wording included.
- Size: 30 x 30 x 30cm H

| INDOOR SMALL PRODUCT               | PRODUCT CODE |
|------------------------------------|--------------|
| MINI Leather-touch                 | PC131        |
| Add-on corporate logo on the front | AD030        |



## THE SESAME RANGE: SENSOR-TOUCH BINS

Manufactured by the internationally acclaimed brand, Nine Stars, Postwink® stocks a wide range of Sensor-Technology bins, which open automatically by a wave of a hand (or the tap of a foot, for the sensor-tap bin). We have baptised this range our SESAME™ range of bins.

These units lock in odours, while making separation of waste cleaner and easier. The brushed stainless steel (of quality grade #430) is finger-print resistant and is of the highest quality.

We welcome bulk orders, however kindly check with us on our stock levels, as bulk orders may attract lead times of 8 to 10 weeks, should the stock not be available at the time of your order. These units are guaranteed for any manufacturing fault for 12 months.

**STANDARD FEATURES**

|   |   |   |   |   |
|---|---|---|---|---|
|  |  |  |  |  |
| MOTION SENSOR   | LONG LASTING BATTERY  | FINGER PRINT RESISTANT  | NON SKID BASE   | TYPE 430 STAINLESS STEEL  |

### 1 TWO-DIVISION RECYCLING SESAME BINS

- 2 divisions, with built-in bag holder (hidden when closed)
- Quality material: #430 brushed stainless steel
- Available in: 70 Litres (540 x 330 x 670mm H)
- Lid automatically opens and closes with sensor technology
- Lid can open manually with the open/close buttons, if preferred
- Labels included on the front.
- Bins take regular D batteries
- **Imported product, please check stock levels on order**



| KITCHEN PRODUCT - SESAME RANGE - 2-DIVISION SENSOR BINS | PRODUCT CODE |
|---|--------------|
| 70 Litres (540 x 330 x 670mm H)                         | SS170        |
| Add-on clear recycling bags                             | AD057        |
| Add-on compostable bags                                 | AB112        |





# INDOOR KITCHENS

## 2 BEEWING - SIDE OPENING SESAME BIN

- Single division, with built-in bag holder (hidden when closed)
- Quality material: #430 stainless steel
- 47 Litres (460 x 360 x 730mm H)
- Lid automatically opens and closes with sensor technology
- Lid can open manually with the open/close buttons, if preferred
- No labels
- Bins take regular +D batteries
- **Imported product, please check stock levels on order.**



| KITCHEN PRODUCT - SESAME RANGE<br>BEEWING SENSOR BIN | PRODUCT CODE |
|--|--------------|
| 47 Litres (460 x 360 x 730mm H)                      | SS1005       |
| Add-on Clear recycling bags                          | AD057        |
| Add-on compostable bags                              | AB112        |
| Add-on recycling sticker, 12 x 12cm                  | AD106        |

## THREE-DIVISION RECYCLING SENSOR BIN -SENSOR-TAP

- 3 divisions, with built-in removable inners in Blue, Green, Grey
- Quality Material: #430 Brushed Stainless Steel
- 45 Litres capacity (580 x 320 x 500mm H) (when open, height is 800mm)
- Lid automatically opens and closes with sensor technology, by tapping your foot on the sensor at the bottom front of the bins.
- Bins take regular +D Batteries
- No labels included. Labels 12cm x 12cm available separately.
- Imported product



| KITCHEN PRODUCT - SESAME RANGE<br>3-DIVISION SENSOR BINS | PRODUCT CODE |
|--|--------------|
| 45 Litres (58 x 32 x 50cm H)                             | SS1010       |
| Add-on Recycling Sticker, each 12x 12cm                  | AD106        |
| Add-on Clear recycling bags                              | AD057        |
| Add-on Biodegradable Bag 30-32L (Bonnie Bio)             | AB113        |



# INDOOR KITCHENS

## COMMERCIAL PEDAL BINS: 25L, 50L, 90L

- Durable, rotomoulded pedal bin
- Available in 25L, 50L and 90L sizes
- Can be manufactured in most standard colours
- No inners, so bag must be used
- Branding section available on the lid or on the front
- Dimensions 25L version: 37 x 27 x 38cm H
- Dimensions: 50L version: 44 x 39 x 54cm H
- Dimensions: 90L version: 50 x 40 x 75cm H
- Made in South Africa, made to order



50L black pedal bin with label

25L, 50L & 90L pedal bins

90L pedal bin in light grey

| KITCHEN PRODUCT                            | PRODUCT CODE |
|--|--------------|
| Pedal bin, 25L                             | PR1015       |
| Pedal bin, 50L                             | PR1000       |
| Pedal bin, 90L                             | PR1001       |
| Add on- label on the lid, standard artwork | AD093        |

## THE MODULAR RECYCLING BIN SET

The modular units come in two designs, which we call the “HOLE TOP” and “CURVED TOP” modular units.

- 70L capacity; outer dimensions (1 unit): 41 x 41 x 95cm H
- Waste Names available: Paper, Cans, Glass, Plastic
- Any other waste names to use branding boards
- Monster cut-outs (at the back of the lids) available
- Rotomoulded, hence highly durable for outdoor or indoor use
- CURVED TOP have oval-shaped holes unless requested otherwise
- HOLE TOP design have round/circle throw-in holes (size 20x 20cm)



Hole top modular unit



Branded domed modular units



Branded monster cut-out units

| MODULAR RECYCLING BIN SETS<br>PRICED PER UNIT | PRODUCT CODE |
|---|--------------|
| Modular unit per unit (without inner)         | PR223        |
| Branding boards per unit: 27.5 x 9cm H        | AD038        |
| Monster cut outs (per unit)                   | AD051        |
| Robust inner (one per unit)                   | AD060        |

## LARGE SWING FLAP DIPPED STAINLESS STEEL UNIT

- 70L capacity; outer dimensions (1 unit): 40 x 40 x 70cm H
- Made from coated stainless steel #430 (“Dipped” means coated to allow for outdoor usage); bin on feet
- Mirror finish
- Large swinging flap
- Inside bag holder to secure a standard size 750 x950mm bag
- High quality, made locally.



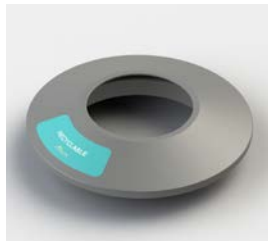
| LARGE SWING FLAP DIPPED<br>STAINLESS STEEL UNIT | PRODUCT CODE |
|---|--------------|
| Large swing flap stainless steel bin (dipped)   | SS274        |

## THE RECYCLE LID ON CEMENT BINS

- Recycle lid fits snugly onto round concrete bin
- Concrete cobble bin: 50 x 50 x 75cm
- Bin weighs approx. 185kgs
- Recycle lid rotomoulded for durability
- High-quality outdoor label is UV-resistant
- Recycle lid available in most colours
- Recycle lid can be hinged onto the bin (additional cost, subject to location)



| OUTDOOR COBBLE BIN SET                     | PRODUCT CODE |
|--|--------------|
| Round concrete cobble bin, 70L             | OT111        |
| Recycle lid (excl. label, various colours) | PR1017       |



## THE STELLID ON SQUARE CEMENT BINS

- Stellid fits snugly onto square concrete bin
- Concrete cobble bin: 50 x 50 x 75cm
- Bin weighs approx. 185kgs
- Recycle lid rotomoulded for durability
- High-quality outdoor label is uv-resistant
- Stellid available in most colours
- Stellid can be hinged onto the bin (additional cost, subject to location)



| OUTDOOR COBBLE BIN SET  | PRODUCT CODE |
|---|--------------|
| Square concrete cobble bin, 70L   | OT111        |
| Stellid (excl. label, various colours)  | PR1029       |
| Stellid label: outdoor vinyl or printed onto product for bulk orders (100+ units) | AD114        |

## THE POLYPLANK DOUBLE BIN

- Fit 2 x 240L wheelie bins inside
- Approx 150 x 88 x 132cm
- Lockable & very sturdy
- Highly durable - recycled plastic ("wood" look)
- Can be branded with signage boards
- **Note these are very heavy units and hence transport costs can be significant**



| POLYPLANK DOUBLE UNIT               | PRODUCT CODE |
|-------------------------------------|--------------|
| PolyPlank double unit - no branding | PC264        |
| Add-on branding (two: 1 per door)   | AD094        |

## THE BISHOP UNIT

Ideal for outdoor usage, these units, sold individually, turn a regular 240L wheelie bin (which fit inside) to a great looking recycling bin. With large branding space on the front and a throw-in hole insert which matches the colour of your waste type, the Bishop will make waste separation easy to understand and communicate.

- Very sturdy, durable, rotomoulded
- Each fit 1 x 240L wheelie bins, so 240L capacity
- Front door opens and can be locked (padlock not included)
- Throw-in hole insert changes colour to match waste name being collected
- Customized front branding possible
- Outer dimensions: 66 x 95 x 138cm H (per unit)
- Made in South Africa



| OUTDOOR PRODUCT         | PRODUCT CODE |
|-------------------------|--------------|
| Bishop outdoor unit     | PR310        |
| Add-on 240L wheelie bin | PI202        |

## THE RECYCLING IGLOO

The Postwink® Igloo neatly collects any kind of bulk recyclable waste. Throw your recyclables into one of the three openings and these are directed into either a 1-ton capacity bulk bag or 3 separate 210 litre drums (available separately). Importantly, these Recycling Igloos™ can be emptied by all recycling collectors, as they only require manual handling to empty, by either opening the top or the front doors.

- Made in South Africa from robust plastic (polyethylene), which is 100% recyclable
- Using a bulk bag, the capacity of this bin is 1000 litres
- Outer size: 140 x 130 x 150cm H, oval throw-in hole size is 35 x 20cm
- Secure locking system: front doors and top lid lockable using secure cam locks (1 key per igloo)
- Add-on: 1-ton capacity bulk bags and/or 210L steel or plastic drums
- Price includes cut-out lettering by throw-in holes
- Note this unit can be converted to a composting igloo - see the section on composting for details



| RECYCLING IGLOO™                              | PRODUCT CODE |
|---|--------------|
| Postwink® Recycling Igloo™ 1.3 x 1.4 x 1.5m H | PR305        |
| Bulk bag (1-ton, new) - to use as liners      | AD012        |
| Drums (refurbished, steel) - to use as liners | AD013        |
| Igloo branding on front doors & sides         | AD015        |
| Igloo branding on front doors only            | AD018        |



### STAND-UP ASHTRAY WITH LITTER BIN FRONT

- Size: 240mm diameter x 600mm high
- Ashtray lid and hole on the sides for general waste
- Available in black powder-coated, or brushed stainless steel

| STAND-UP ASHTRAY WITH LITTER BIN FRONT                  | PRODUCT CODE |
|---|--------------|
| Black coated steel standing ashtray and litter bin      | H001         |
| Brushed stainless steel standing ashtray and litter bin | H003         |



### WALL-MOUNTED ASHTRAY

- Size: 9cm diameter x 30cm high
- Available in Black powder-coated, or brushed stainless steel.

| WALL-MOUNTED ASHTRAY                                 | PRODUCT CODE |
|--|--------------|
| Black coated steel wall-mounted ash pillar ashtray * | H043BL       |
| Brushed stainless steel wall-mounted ashtray *       | H043SS       |

\*Excluding installation



### CONCRETE PYRAMID ASHTRAY

- Size: 400mm wide x 850mm high
- Weight : 220kgs
- Due to the weight, these cannot be collected from us, and we will deliver to your site

| CONCRETE PYRAMID ASHTRAY | PRODUCT CODE |
|--------------------------|--------------|
| Concrete Pyramid Ashtray | OT123        |



## CONFIDENTIAL PAPER BINS

Units come with a locking mechanism, and paper slot. No special liners included, no servicing included. Unit complies with the POPI Act.

### 1 THE CONFIDENTIAL LEATHER-TOUCH

- Custom-made bin from ABS plastic (incl. recycled content)
- Includes locking system
- Standard front printing included
- Has a bag holder inside (holds regular sized liners)
- Throw-in hole is a paper slot size 25mm wide

| CONFIDENTIAL PAPER BINS              | PRODUCT CODE |
|--------------------------------------|--------------|
| MAXI Confidential : 40 x 36 x 80cm H | PC239        |
| MEDI Confidential : 40 x 36 x 60cm H | PC186        |
| Add-on Corporate logo on the front   | AD071        |



### 2 THE CONFIDENTIAL WHEELIE BIN

- Wheelie bin with locking system and cut-out paper slot
- Padlock not included
- “Paper” or “Confidential Paper” label included
- Blue is the recommended paper colour

| CONFIDENTIAL PAPER BINS       | PRODUCT CODE |
|-------------------------------|--------------|
| Confidential 140L wheelie bin | PI251        |
| Confidential 240L wheelie bin | PI265        |



## BATTERY COLLECTION / CFL BULBS BINS / SMALL E-WASTE

These are ideal for consumer battery collections (e.g. AA/AAA household batteries) and for consumer-friendly CFL bulbs, but not ideal for the long fluorescent tubes. Other small e-waste (electronic waste) can also be collected, such as phones, cables, mouse, etc.

**Important: Always collect Lithium batteries and rechargeable Batteries separately from household alkaline batteries. Lithium batteries and rechargeable Batteries should ideally be collected in steel bins - not plastic.**

### THE BATTERY ECOCYLINDER™

- 100-litre capacity, 485mm diameter x 660mm height
- Labelling of the lid is layered for durability and scratch-resistance
- Bin made of polyethylene (100% recyclable) & is very robust
- No separate liner included
- Always collect lithium batteries and rechargeable batteries separately from household alkaline batteries

| BATTERY ECOCYLINDER™               | PRODUCT CODE |
|------------------------------------|--------------|
| Battery Ecocylinder™               | PR102B       |
| Add-on rubber castor wheels (x 4)  | AD040        |
| Add-on Corporate logo on the sides | AD070        |





## EWASTE

- 80L wheelie bin -comes with handle on lid.
- 120L wheelie bin -comes with handle on lid
- 140L wheelie bin: 587 x 482 x 1009mm
- 240L wheelie bin: 580 x 600 x 1075mm
- 770L wheelie bin: 750x 1300 x 1300mm
- 1 100L bin: 1070 x 1265 x 1380 mm high



| CONFIDENTIAL PAPER BINS              | PRODUCT CODE |
|--------------------------------------|--------------|
| MAXI Confidential : 40 x 36 x 80cm H | PC239        |
| MEDI Confidential : 40 x 36 x 60cm H | PC186        |
| Add-on Corporate logo on the front   | AD071        |

## THE COFFEE ECOCYLINDER™

In many offices, coffee cups are either reducing recycling bins' capacity or are contaminating the rest of the recyclables with their left-over liquids. In order to improve your recycling rates, use a Coffee recycle bin to separate cups, stirrers and lids and left-over liquids.

- Outer size: 485mm diameter x 660mm height
- 3 separate holes and inners:
  - 1 x half-inner for cups
  - 1 x quarter inner for stirrers or lids
  - 1x special quarter inner for left-over liquids
- All 3 inners are removable.
- Labelling of the lid is layered for durability & scratch-resistance
- Bin made of polyethylene (100% recyclable) & is very robust

| COFFEE ECOCYLINDER™                | PRODUCT CODE |
|------------------------------------|--------------|
| Coffee Ecocylinder™                | PR183        |
| Add-on rubber castor wheels (x 4)  | AD040        |
| Add-on corporate logo on the sides | AD070        |
| Full wrap-around branding          | AD007        |



## MEDICAL / BIOHAZARD WASTE BINS & BAGS

Ideal for non-sharp biohazard waste, the below options are ideal to collect outdated medicines, disposable gloves and masks, and other PPE equipment.

- 240L Litre wheelie bin with cut-out round throw-in hole
- 25L, 50L or 90L pedal bins in red
- Ecocylinder bins (100L capacity, hole-top)
- Cardboard bins with labelling, 70L or 100L
- Red plastic bags “Biohazard Waste”, 750 x 950mm, 40 micr.
- Yellow plastic bags (unprinted), 750 x 950mm, 40 micr.



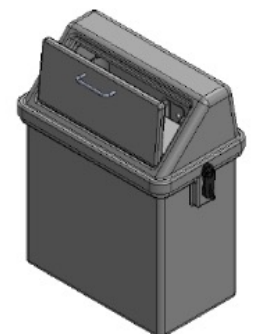
| PPE BINS   | PRODUCT CODE |
|--|--------------|
| PPE 240L wheelie bin with cut-out                                    | PI202/AD010  |
| Add a pedal to your 240L wheelie bin*                                | AD104        |
| Pedal bin, 50L, 44 x 39 x 54cm H (excl. label which can be included) | PR1000       |
| Pedal bin, 90L, 50 x 40 x 75cm H (excl. label which can be included) | PR1001       |
| Cardboard bins, 75L or 100L  | CB171 /CB189 |
| Red tinted Biohazard Bags - pack of 50 pces                          | AD101        |
| Yellow tinted bags - pack of 50 pces                                 | AD120        |

## MONKEY-PROOF BINS 45L AND 90L

These robust bins come in a tall and a short version, both of which come without installation. Labelling can be added using Postwink’s range of recycling labels, customised for your needs.

- Rotomoulded, hence highly durable for outdoor or indoor use.

| MONKEY-PROOF BINS                          | PRODUCT CODE |
|--|--------------|
| Monkey-Proof Short Bin, 44 X 25 X 60cm H * | PR1037       |
| Monkey-Proof Short Bin, 44 X 25 X 60cm H * | PR1038       |
| Add-on Labelling                           | AD001        |



\*Excluding installation

## COMPOSTING BINS: BINS THAT KEEP FOOD SCRAPS



Composting is the recycling of your food waste into compost, a valuable resource for our soils. Composting your food waste is crucial to reduce your output to landfills – food on landfills are the biggest contributors to methane being released into the atmosphere from landfills. Furthermore, in the Western Cape, food waste and other organic waste will be banned entirely from landfills from 2027.

Composting can be done in offices and hotels; there are multiple methods of composting which can be implemented:

- **Use Bokashi** – its microbes eliminate the odours of food waste and quickens the natural composting process. The food waste induced with Bokashi can then be collected by a composter, or composted on-site in a composting vessel (see below).
- **Use certified compostable bioplastic as liners**, which are also breathable and hence will reduce any odours. Bioplastic liners allow ease of disposal for composting collections.
- **Using worms (vermiculture) allows on-site composting** – although worms will not accept meat, citrus or dairy, worms are maintenance-free and odour-free. An easy solution for small offices.
- **Using a garden composter** allows on-site composting in a garden area of any size.
- **Using a composting vessel (called an IVC – In-Vessel Composting)**. These are for commercial solutions for organisations with food output from 2 ton per month and more. Contact us for more information on these.

### 1 COMPOSTING ECOCYLINDER™

- Outer size: 485mm diameter x 660mm height
- Labelling of the lid is layered for durability and scratch-resistance
- Bin made of polyethylene (100% recyclable) & is very robust
- Rope handles and closed lid
- 4 x rubber castor wheels included
- Can be used to collect & store food waste treated with Bokashi

| COMPOSTING BIN   | PRODUCT CODE |
|--|--------------|
| Composting Ecocylinder™ (no holes, on wheels with rope handles)        | PR165        |
| Recycling Label for the side   | AD001        |
| Rotomoulded, durable heavy-duty Dolly (4 wheels) 470mm inside diameter | AD052        |



### 2 EARTH BOKASHI BUCKET BIN, 25L AND BOKASHI

Bokashi is wheat bran brewed with a combination of naturally occurring beneficial bacteria, yeasts and fungi. Bokashi (which looks like a bran-type substance) is used around the world to manage food waste through an anaerobic fermentation system. When bokashi is added to food waste in an anaerobic digester, these microbes work in symbiosis to ferment the waste thus preventing rotting and ridding it of pathogenic bacteria. Earth Bokashi is made from all natural ingredients that is non- genetically modified and not chemically engineered.

- Ideal for smaller spaces – lid should be kept closed as much as possible – hence use a small counter bin to collect the waste & throw into this bin for storage
- 25L plastic bucket bin, with lid, a strainer and a tap -this bin is airtight
- Bins and Bokashi made in South Africa
- Ask us for our educational Bokashi pamphlet on how to use it in an office environment

| COMPOSTING BIN                             | PRODUCT CODE |
|--|--------------|
| Bokashi 25 litre bin (with strainer & tap) | E504         |
| Add-on Earth Bokashi bucket – 700g         | E500         |
| Add-on Earth Bokashi – 2kg                 | E501         |
| Add-on Earth Bokashi – 4kg                 | E502         |
| Add-on Earth Bokashi – 10kg                | E507         |
| Add-on Earth Bokashi – 25kg                | E503         |



### 3 AIRTIGHT BOKASHI DRUMS, 50L OR 100L TO 150L (REFURBISHED)

Ideal for commercial buildings who are using bokashi to compost their food waste\*. These refurbished blue airtight drums are durable, refurbished plastic drums used to store food waste in between collections. (Ideally, food waste is mixed with Bokashi Bran to speed up the composting process).

- Ideal to store food waste in between collections
- Best used with Bokashi bran, to start the composting process on site. Bokashi will reduce bad smells too
- Approx. 100L, 120L or 150 litres – depending on availability
- Use a heavyweight dolly to wheel full drums around
- **Since these are refurbished bins, final size may differ depending on availability. Hence please check prior order.**

| COMPOSTING BIN  | PRODUCT CODE |
|---|--------------|
| Refurbished blue plastic drum with lid: 100L-150L                         | PR188        |
| Refurbished blue plastic drum with lid: 50L                               | PI1024       |
| NEW blue plastic drum with lid: 50L                                       | PI1023       |
| Recycling label for the side  | AD001        |
| Rotomoulded, durable heavy-duty Dolly (4 wheels)<br>470mm inside diameter | AD052        |

\*These drums are also ideal to store used oil for recycling.



### 4 AERATED KITCHEN CADDY, WITH COMPOSTABLE LINERS

- Ideal when a bag system is preferred for ease of operations
- The aerated bag ensures no odours and ease of disposal
- Full bags can then be stored in a wheelie bin or Ecocylinder bin
- Small enough to collect food waste on kitchen counters
- Outer size: approx. 19 x 23 x 21cm high; approx. 7L capacity
- Green body with clear removable lid, steel handle
- Roll of Bonnie Bio compostable bags has 20 bags
- Imported product, please check stock levels on order

| COMPOSTING PRODUCT                                     | PRODUCT CODE |
|--|--------------|
| Aerated kitchen caddy                                  | PI185        |
| Add-on Bonnie Bio compostable bags: 11-12L, roll of 20 | AB119        |



### 5 ROUND / SQUARE FOOD COLLECTION COMPOST BINS, 15L

- Ideal to collect food waste on kitchen counters – big enough for commercial kitchen counters
- Removable lid, handle for ease of carry
- No bags required, removable lid
- Colour: green for round; charcoal for square-shaped
- Approx. 15 litre capacity
- All bins come with “Food Scrap” labelling (white letters)
- **Imported product, please check stock levels on order**

| FOOD SCRAP COUNTER BINS- 15 LITRES | PRODUCT CODE |
|------------------------------------|--------------|
| Round Compost bin - 27 x 27cm      | PI1012       |
| Square Compost bin -28 x 20 x 30cm | PI1011       |



## 6 WORM FARMS

- Ideal for smaller office kitchens and balconies, guest houses and schools
- UV Resistant, strong and durable
- Both options Include 2 working trays, with an additional drainage tray
- Built-in tap for the worm liquid (which can be used in plants)
- Supplied together with a coco block for the worm bedding, a worm blanket, 500 composting worms and Instructions
- Can be kept inside or outside (no smells) but must be out of direct sunlight

| WORM FARM OPTIONS & ADD-ONS    | PRODUCT CODE |
|--------------------------------|--------------|
| The Worm Oasis (green)         | PR168        |
| 500 worms for Composting *     | AD095        |
| Coco Coir brick (worm bedding) | CPO02        |
| Worm Farm Blanket (hessian)    | CP003        |

\*Worms can be shipped nationally.



Worm oasis

## 7 THE SMALL GARDEN COMPOSTERS

- UV Resistant, strong and durable
- Made locally, and both come with Instructions
- 2 options: 1 with base, 1 without base

| GARDEN COMPOSTERS                        | PRODUCT CODE |
|--|--------------|
| 200L capacity (with base) 80 x 34 x 93cm | PR256        |
| 150L capacity (no base) 63 x 71 x 78cm   | PI1019       |



200L with base



150L without base



## THE BULK GARDEN COMPOSTER: COMPOSTING IGLOO

- Our recycling igloo converted to a garden composter
- Throw your garden & food waste via the top lid and keep the front doors locked in between mixing the content.
- Capacity: 1 000L
- Unit is made in South Africa from robust plastic (polyethylene), which is 100% recyclable.
- Outer size: 140 x 130 x 150cm High
- Drainage holes on the base
- Secure locking system: front doors using secure cam locks (1 key per igloo)



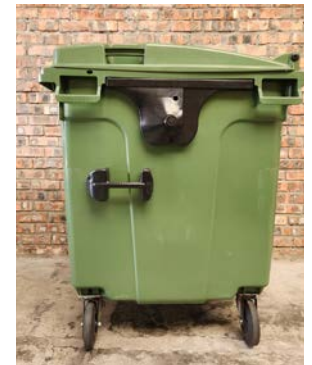
| RECYCLING IGLOO™                              | PRODUCT CODE  |
|---|---------------|
| Postwink® Composting Igloo 1.3 x 1.4 x 1.5m H | PR305-Compost |
| Igloo branding on front doors & sides         | AD015         |
| Igloo branding on front doors only            | AD018         |



# RECYCLING STORAGE / WASTE AREAS

## COLOUR-CODED WHEELIE BINS

- 80L wheelie bin -comes with handle on lid.
- 120L wheelie bin -comes with handle on lid
- 140L wheelie bin: 587 x 482 x 1009mm
- 240L wheelie bin: 580 x 600 x 1075mm
- 770L wheelie bin: 750x 1300 x 1300mm
- 1 100L bin: 1070 x 1265 x 1380 mm high
- Colours for 80L, 120L, 140L, 240L: Green, Blue, Yellow, Red, Orange, Black (White in 240L only)
- 770L and 1 110L Colours: Green or Black only -kindly check stock
- Different Labelling options: standard labelling on the front, or full shaped branding on the front.
- Cut-out holes (on the front or on top of the lid) and locking systems available for all the wheelie bins.
- Pedal option for Hands-free lid opening available for 80L and 240L (other sizes on request, Minimum order quantity may apply).





# RECYCLING STORAGE / WASTE AREAS

## COLOUR-CODED WHEELIE BINS



| WHEELIE BINS  | PRODUCT CODE |
|---|--------------|
| 240 litre wheelie bin- full colour or Black                       | PI202        |
| 140 litre wheelie bin- full colour or Black                       | PI204        |
| 120 litre wheelie bin - full colour or Black, lid Handle included | PI275        |
| 80 litre wheelie bin - full colour or Black, lid Handle included  | PI1036       |
| 770 litre wheelie bin- green / charcoal                           | PI234        |
| 1100 litre wheelie bin- green / charcoal                          | PI235        |

| LABELLING, ADD-ONS TO WHEELIE BINS                                       | PRODUCT CODE  |
|--|---------------|
| Regular Recycling Label, incl. application                               | AD001         |
| Shaped Front Branding, incl. application                                 | AD045         |
| Customise Wheelie bin Labels' Colours / Wording                          | AD078         |
| Cut-out throw-in holes OR Locking System                                 | AD010 / AD011 |
| Add-On Bags of 50 x Lrg Clear Plastic Liners 1240x1300 40micr            | AD042         |
| 240L or 80L Wheelie Bin Add-On Pedal (excl. Bin) *                       | AD104         |
| *Pedal system must be ordered with a Postwink wheelie bin - no retrofits |               |





# RECYCLING STORAGE / WASTE AREAS

## BULK BAG STEEL FRAME

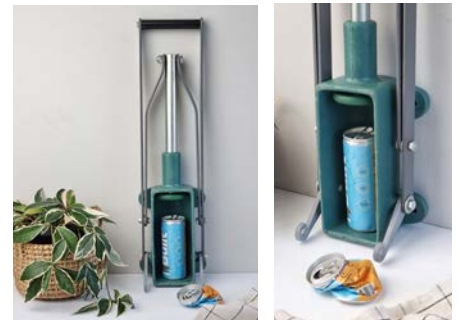
- Strong & durable galvanised steel
- Used to hang the standard 1-ton (100 x 100 x 100cm) hessian bags
- Comes unassembled for more efficient transport
- When assembled, dimensions: 130cm W x 130cm L x 150cm H
- Capacity: Approx. 1000 litres
- Waste name branding boards can be added on the front
- Made in South Africa



| WASTE AREA PRODUCT                         | PRODUCT CODE |
|--|--------------|
| Steel Frame for Bulk Bags                  | SS270        |
| 1-ton Bulk Bag (approx. 100 x 100 x 100cm) | AD012        |
| Branding boards per unit: 27.5 x 9cm H     | AD038        |

## ALUMINIUM CAN CRUSHER - WALL MOUNTED

- Crushes beverage cans to improve space capacity
- Crushes one can at a time
- Wall mounted – comes with screws, excl. installation.
- Not suitable for steel, food cans.
- Made in South Africa



| WASTE AREA PRODUCT                 | PRODUCT CODE |
|------------------------------------|--------------|
| Wall-mounted aluminium can crusher | AD107        |

## WALL SIGNAGE

- 0.9mm ABS Board, colour printed
- Template artwork can include your corporate logo
- Own artwork and design possible
- Prices exclude installation
- Can include corner screw holes for installation which requires it being bolted to the wall
- No metal frame included – can be done on request
- **Ask us for a quote for a customised sizes**



| WALL SIGNAGE: PRINTED ABS BOARD | PRODUCT CODE |
|---------------------------------|--------------|
| Standard size: 90 x 40cm        | AD122        |
| Extra large size: 115 x 60cm    | AD121        |



## ADD-ONS & SERVICES FOR A SUCCESSFUL INITIATIVE

At Postwink®, we want you to set up a successful recycling initiative, one that actually works over the long-term. We want to provide you with recycling bins and other resources that will encourage separation at source and help promote a recycling culture in your working environment or/and community. The services that are listed below are key to a successful initiative.



| WALL SIGNAGE / EDUCATIONAL MATERIAL   | PRODUCT CODE |
|---|--------------|
| A3 light cardboard poster: "Recycling List" or "Composting List" - including company logo | AD081        |
| A3 standard laminated paper 80mg, recycling / composting posters                          | AD019        |
| A3 branding board (large) ABS plastic 0.9mm signage, per unit, A3, full colour            | AD094        |
| Additional Postwink® recycling labels: 400 x 270mm  | AD001        |
| Recycling launch training session for staff (Cape Town or Gauteng only)                   | H053         |



| RECYCLING BAG LINERS   | PRODUCT CODE |
|--|--------------|
| Clear recycling bags (100% recycled) - roll of 20, regular size: 750 x 950mm | AD057        |
| Wheelie bin size bags (clear, 1240x1300 40micr, pack of 50 pcs)              | AD042        |
| Red-tinted biohazard bags - pack of 50 pcs, 750 x 950mm, 40 micr.            | AD101        |
| Yellow-tinted biohazard bags - pack of 50 pcs, 750 x 950mm, 40 micr.         | AD120        |



| CERTIFIED COMPOSTABLE LINERS - IDEAL TO COLLECT FOOD & GARDEN WASTE | PRODUCT CODE |
|---|--------------|
| Bonnie Bio compostable 11-12L bags, pack of 20                      | AB119        |
| Bonnie Bio compostable 30-32L bags, pack of 15                      | AB113        |
| Bonnie Bio compostable 85L bags, pack of 12                         | AB112        |



# SOME OF OUR CORPORATE CLIENTS

